



CASE STUDY

Confidence that Grows With Them:

Supporting Every Child and Every Educator with Vizzle

Some breakthroughs in Lancaster Independent School District don't show up first in the data. They start when a student realizes they can do something they once thought was out of reach.

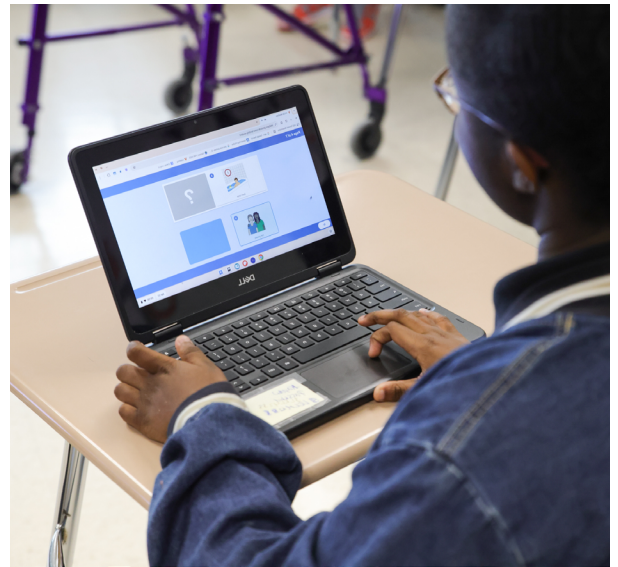
Mr. Carl Butler, a life skills teacher at Lancaster High School, sees that moment every year. A student who has struggled with confidence works through a RethinkEd Vizzle lesson. As they make progress, the visual celebrations his students love—popping balloons, catching lights, fun animations—fuel their motivation to keep learning.

"You can see it," he said. "When we start doing our whole-group lesson, the one who used to be shy is trying to overtake the lesson. That's when you see the light bulb come on."

Those moments stay with students long after they leave his classroom.

Mr. Butler has been with Lancaster ISD for 15 years, teaching grades 9 through 12. His students are intellectually disabled or have cognitive disabilities. He's witnessed countless transformations—students who once wouldn't participate, becoming the first to volunteer at the board.

Stories like these are woven throughout Lancaster ISD, a Texas district known for resilience and high expectations. With up to 87 percent of students economically disadvantaged, Lancaster ISD has made opportunity non-negotiable. As Texas's first K-12 STEM district, the district meets or exceeds all Texas Education Agency standards and maintains a 100 percent graduation rate, reflecting a culture grounded in equity and a belief in every learner.



That belief is intentionally modeled and reinforced by district leadership and begins with Lancaster ISD Superintendent of Schools Dr. A. K. Perera.

"If we want every student to succeed, we must give them access and opportunities they might not otherwise have but absolutely deserve. Every kid deserves the opportunity to be successful. That's our job," said Dr. Perera.

That same culture supports the educators who lead this work. Lancaster ISD continues to achieve record teacher retention, reflecting a system where teachers feel supported, valued, and equipped to make a difference.

THE CHALLENGE:

Commitment to Every Learner – and Every Educator



Lancaster ISD's Special Education department, led by Crystal Cromer, Executive Director of Special Education, is anchored in the principle that every student deserves access to the general education curriculum.

Before adopting Vizzle in 2013, that commitment was difficult to execute consistently. Teachers pieced together homegrown materials and supplemental resources, often reworking general education lessons on their own. This created inconsistency from one classroom to the next.

"We needed something structured. Something aligned. Something that lets our teachers support students and give them the same access without lowering expectations," Ms. Cromer explained.

Mr. Butler remembers those days well. *"Before Vizzle, we had to create lesson plans on our own,"* he said. *"Vizzle has allowed us to free up our time to be able to pour into our students more."*

Dr. Perera sees this as a district-wide priority:

"Our charge is to make learning accessible and meaningful for every student. Any tool we bring in must support teachers. It cannot be one more thing on their plate."

THE RESULTS:

Instructional Impacts across Lancaster ISD

Today, teachers across Lancaster ISD rely on Vizzle as a Texas Essential Knowledge and Skills (TEKS)-aligned platform that supports individualized instruction and accelerates access to grade-level content. Educators highlight several ways the platform is making a difference across classrooms.



Lessons that meet students where they are – without lowering the bar

Vizzle allows teachers to adjust academic levels, differentiate quickly, and maintain alignment with TEKS.

“It has allowed us to really pour into our students. It’s made it a lot easier and the transition smoother, so we can concentrate more time on the children,” Mr. Butler explained.

Before Vizzle, instruction often followed a one-size-fits-all model. Now, teachers have visibility into each student’s unique needs and goals.

“The time savings allow you to focus on each child, rather than the one-size-fits-all model. You can individualize instruction for that particular child,” Mr. Butler said.

Data that strengthens instruction and supports educator confidence

Vizzle’s progress monitoring and lesson-level mastery indicators give teachers clear insight into skill progression.

“The data tells the story,” Ms. Cromer said. *“You can see where gaps are closing. You can see when a student is ready for more.”*

For Mr. Butler, the data transforms how he teaches. *“It gives you the opportunity to be proactive rather than reactive,”* he explained. *“If you wait until mid-year or end-of-year testing, sometimes you’ve lost more ground than you can gain. When I monitor students weekly, I can help strengthen weak areas and add another layer of depth where they’re already strong.”*

This clarity supports new teachers, sharpens experienced teachers’ precision, and guides paraprofessionals who help reinforce lessons. Across the district, both teachers and paraprofessionals rely on the platform to maintain instructional alignment.

A confidence engine for students

Students take to Vizzle quickly thanks to its intentional design, including visual structure, predictable pacing, and celebration animations that reinforce effort.

Mr. Butler describes how his students respond to the platform, *“They look forward to it because they get to own their part of educational growth. They’re tied into the games, the videos, the sound—it’s talking to them and reading to them. Then they receive it and apply what they’re learning.”*

“They light up because they’re gaining their independence in education and they’re not having to totally depend on us to give them that,” he said.

The animations at the end of lessons are particularly powerful. *“Those celebratory moments are game changers,”* Mr. Butler said. *“They want to get in front of the class to pop the bubbles and catch the lights. They’re attentive and locked in because of those moments.”*

Clear, accessible lessons reduce frustration, which directly improves behavior. Ms. Cromer sees this regularly.

“A lot of behaviors come from frustration. When students understand what is expected and can access the lesson, you see fewer behavior challenges,” said Ms. Cromer.

Mr. Butler has witnessed dramatic transformations. *“I had one student with behavior issues who didn’t want to attend class. When he used Vizzle, it removed that barrier. Now he’s the one running to the board. Behavior problems usually happen because students are afraid to make mistakes in front of people. When you create that safe environment, it takes down those walls.”*



A tool that supports general education, too

Though Vizzle was initially implemented in Special Education, teachers now use it for general education reinforcement as well.

This district-wide use builds consistency. Ms. Cromer describes it as a shared instructional foundation:

“It gives us a common language. When everyone uses the same tool, instruction feels more consistent and expectations feel aligned.”

This consistency also supports smooth transitions between teachers, grades, and campuses.



Independence at home and at school

Vizzle also strengthens learning beyond the classroom. With simple Clever access, students work independently at home – an especially meaningful shift for families of students with special needs.

Parents appreciate being able to see their child’s progress. *“They love that they can not only hear about the plan, but see it,”* Mr. Butler explained. *“Every lesson shows what their child got right and wrong. When we share that in parent-teacher conferences and they see concrete growth in specific areas, it takes it to a whole new level.”*

Impact That Scales Across the District

Lancaster ISD's long-term investment in Vizzle has produced measurable, scalable gains:

- ✓ 85% of licensed users engage at least twice per week
- ✓ Students have completed 20,000+ lessons in just four months
- ✓ TEKS-aligned scaffolding improves skill progression
- ✓ Students show greater confidence and independence
- ✓ Teachers report fewer frustration-based behaviors
- ✓ Instruction is more consistent across classrooms and campuses

Dr. Perera sees these outcomes as directly connected to Lancaster ISD's values:

"If you take care of the teacher, they'll take care of the kids. My job is to make sure they have the resources to do that. Tools like Vizzle."

The Takeaway

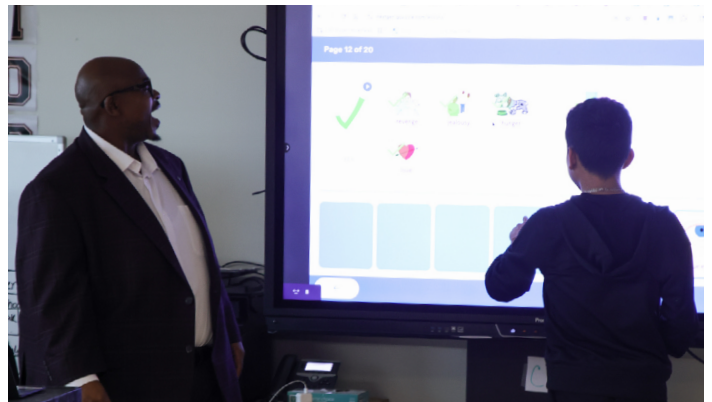
Lancaster ISD's partnership with RethinkEd reflects a simple truth: when confidence grows, students grow—and when teachers have tools that help them deliver strong, aligned instruction, they stay, and they thrive.

When asked what he would tell other district leaders about Vizzle, Mr. Butler emphasized the gift of time:

"It gives you your time back to free your hands and open your heart – to truly pour into the children you're invested in."

"It's worth the investment," he said. "You see the fruit - growth, students lighting up, confidence building, independence in their learning. It's a game changer."

Vizzle is a common instructional experience students and educators can count on. It supports the whole learner, empowers the whole educator, and strengthens the bonds that make the district feel like home.



Stories like this show what's possible when students and educators are given the tools and support to thrive.

Learn more about what Vizzle can do for your district.



Explore
Vizzle